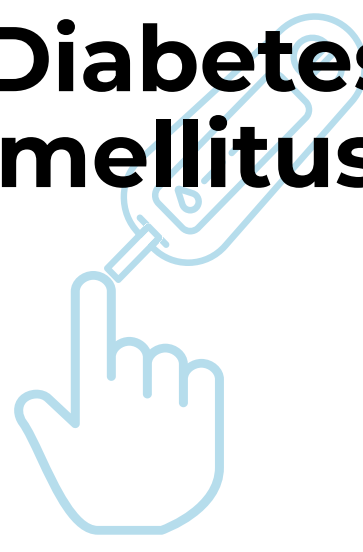


How often are chronic diseases occurring in people with intellectual disabilities?

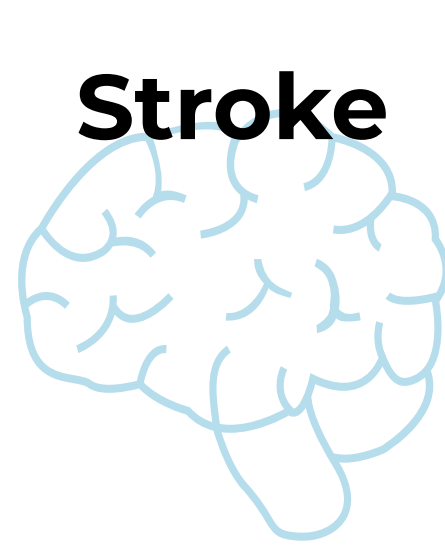
Diabetes mellitus



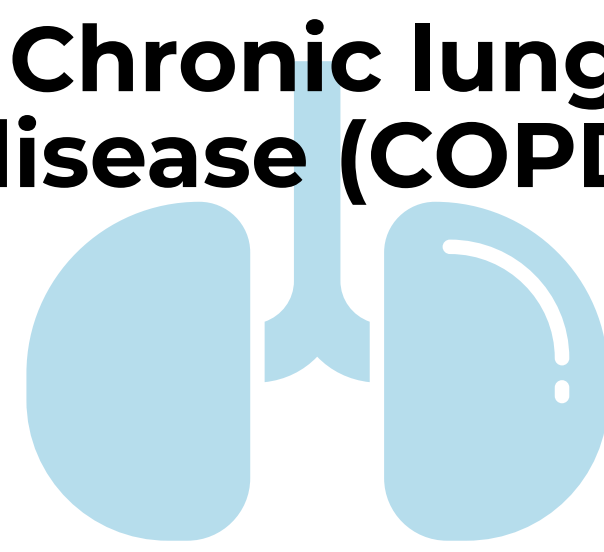
Coronary heart disease



Stroke

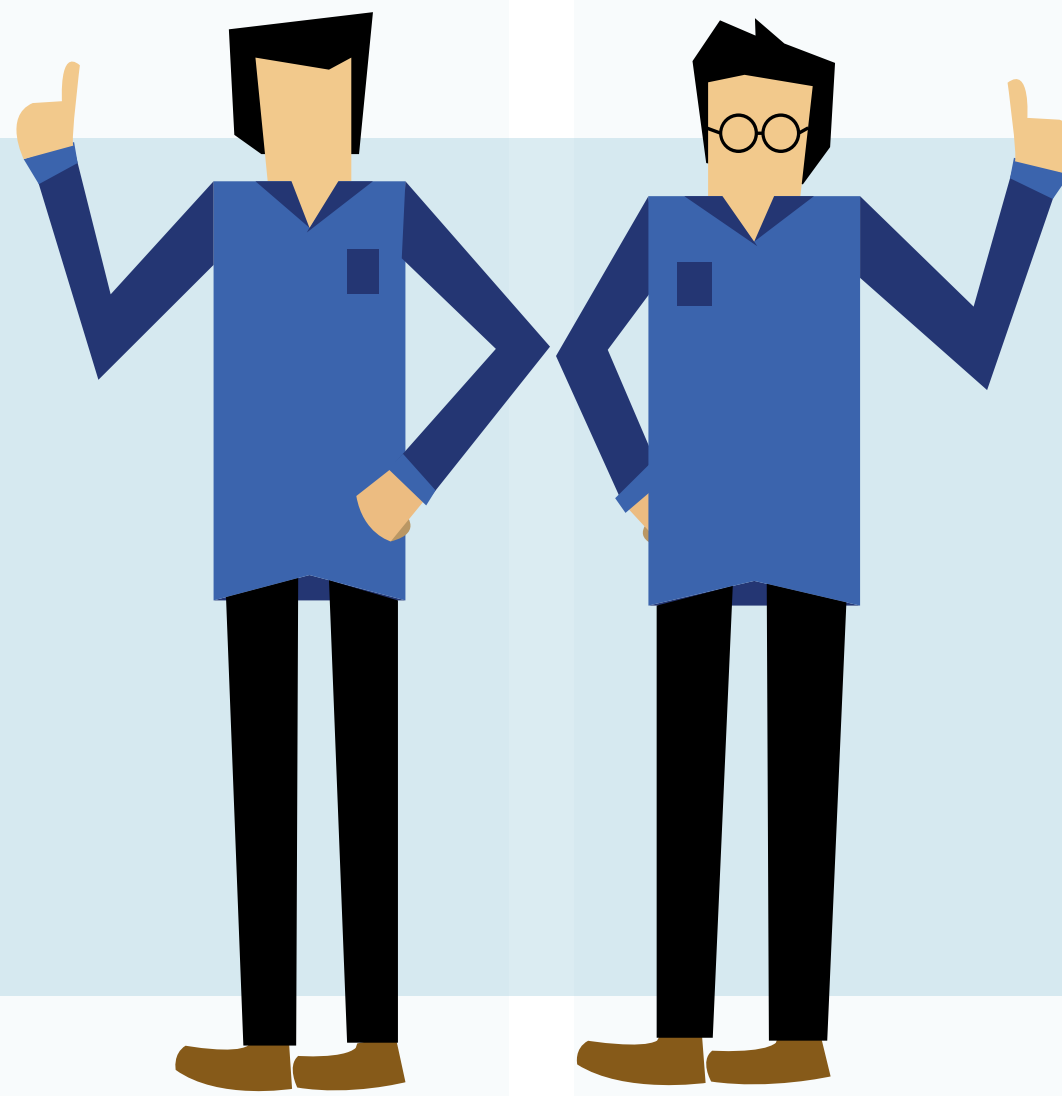


Chronic lung disease (COPD)



People with intellectual disabilities

People without intellectual disabilities



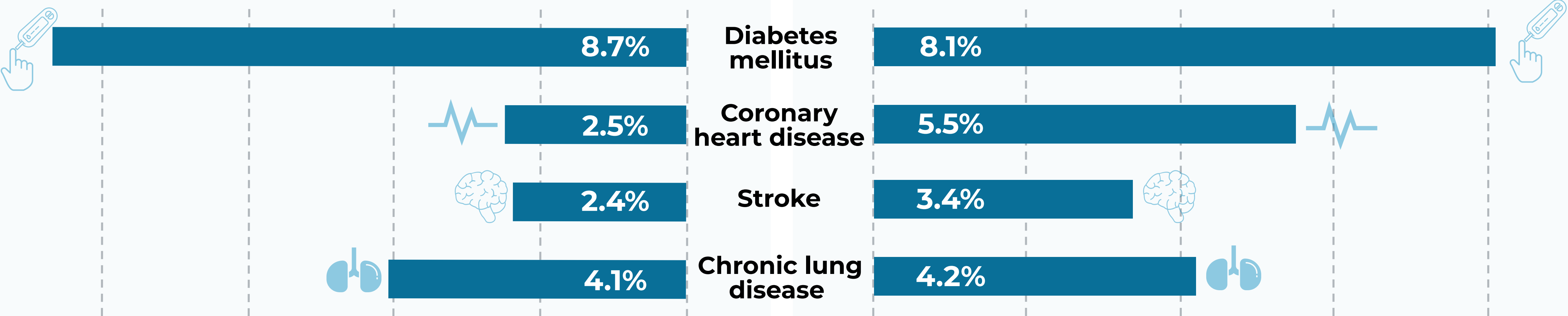
18,114 people, of which

2,653 (14.9%) have at least one chronic disease

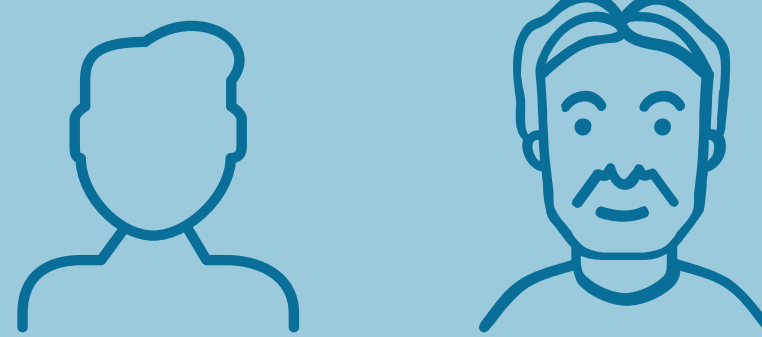
1,093,995 people, of which

184,681 (16.9%) have at least one chronic disease

We saw important differences between these two groups:

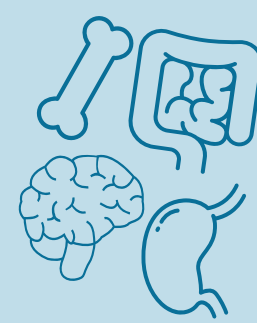
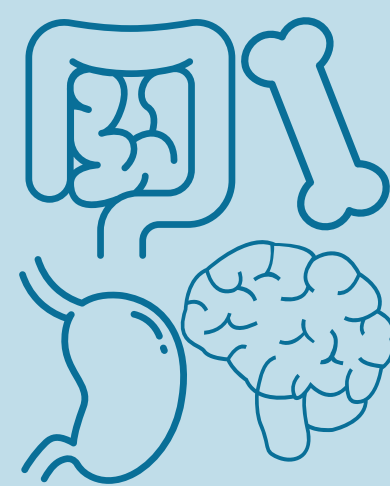


Chronic diseases are more often occurring at **younger ages**



The **older**, the more often a diagnosis of a chronic disease

People **more often** have multiple diseases at the same time



People **less often** have multiple diseases at the same time

Men most often have one or more chronic diseases



Women most often have one or more chronic diseases

